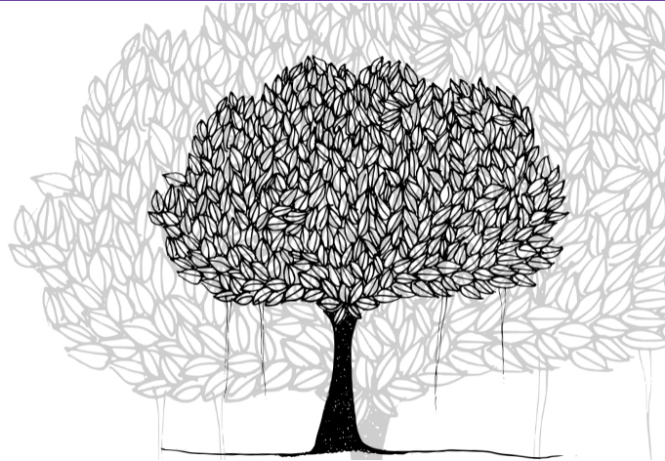


# THE BANYAN



Issue 139

April 22, 2022



Zhu Hai International School weekly newsletter



## From the First Floor

Dear ZIS Community,

Tomorrow is the **2022 ZIS International Day** – one of our favorite events on the calendar.

Our ZIS community is invited to share in this special event, made more special as it has been planned and organized by a student committee made up of Year 9 students.

This is student leadership and student agency at its finest. Join us to see what is possible when vision and energy come together for a common cause. For many of these students, this will be their 4<sup>th</sup>, 5<sup>th</sup>, even 6<sup>th</sup> International Day at ZIS – and we can look forward to their fusion of past traditions and new innovations for the 2022 celebration of campus diversity and ZIS international-mindedness.

Following careful COVID protocols, all families are asked to pre-register for the event using this survey:

**International Day Health Form:** <https://forms.office.com/r/ps4akKH1vM>

Please note that attendance to this event for adults requires a 48-hour health code result and a health and travel history that meets Zhuhai city guidelines.

**ZIS International Day 2022**

**Saturday, April 23**

**10am – 3pm**

Lunch is available (68 RMB adults, 45 RMB students) with a special menu ready for all who are hungry.

This past week the students in Years 3-10 completed their Spring **MAP Growth** tests in Mathematics, Reading, and Language Usage. The reason for these tests is to provide a snapshot of student growth over time. And students are growing! The insights generated by the NWEA reporting system is skill specific and allows teachers to target areas of development for each student. Family reports will be shared next week for your review. For more information on MAP Growth testing, please visit <http://zischina.com/resources/>

Parents are invited to campus at 10am on Wednesday, April 27 for a special **Parent Workshop** on ZIS Health and Safety, Safeguarding, and Child Protection. This will be an excellent chance to share how ZIS is working to improve safety, reduce accidents, and to allow students to focus one hundred percent on their learning every day.

Would you believe that we celebrate **15 years of ZIS** next year? This is a perfect time to review our school mission and philosophy as we plan for the next 15 years. The ZIS of today is a different entity compared to its first years, and while the school has held true to its vision of offering a balanced and rewarding academic program to its students, our guiding statements are only fully meaningful when they are investigated and reviewed together. Already we have been asking our students and staff for their insights and input, and now we ask for our parents to share their thoughts, first by taking some time to complete this survey:

**Guiding Statements Survey:** <https://freeonlinesurveys.com/s/LcBFksv7>

Thank you as always for your continued support in making ZIS the best place for our students. I hope to see you tomorrow as we celebrate our students and our school together.

Warm Regards,  
**Andrew VanderMeulen**  
**Head of School**

---

## Upcoming Events

**April 23:** International Day

**April 27:** 10am Parent Workshop: Health, Safety, Safeguarding

**April 28-May17:** IB DP Examinations

**May 2:** Labor Day

**May 16-20:** IB Evaluation Visit

**May 25-26:** PYP Exhibition

**May 27:** Teacher PD Day

**June 3:** Dragon Boat Festival

**June 23:** Last Day of Classes

...view the school calendar online at <http://zischina.com/calendars/>

# celebrate diversity



Perfectly Primary

**MAP TESTING**

This week saw our Primary Students completing their Second Map Test of the year. But what is MAP anyways?

MAP is one of the assessment platforms we use to evaluate and review student growth over an academic year. The MAP test reviews student's Literacy and Numeracy focusing on Reading, Writing, and Mathematics. Rather than a traditional exam where students are compared against each other, this is an individual assessment, where we can celebrate their growth rather than competing with each other.

MAP testing is a fantastic way to see how the students are growing. The test generates questions for the students to answer. If the students get the questions correct, then the following questions increase in difficulty; if students start to get questions wrong, the questions become easier. The application identifies the student's strengths and areas for improvement through this process, and teachers can then assign classwork accordingly. Additionally, leadership can then review class data and adjust the curriculum to continue and promote student growth. We look forward to sharing that data with you soon.

Kind Regards,

**Michael Lattimore**

**Head of EY and Primary**



*Celebrating*





ANIMAL SUPERHERO: Feeds animals when they do not have any food.



SEA SUPERHERO: Keeps the sea clean.

---



PAPER SUPERHERO: Reminds people not to waste paper and to use both sides.

---





FOOD SUPERHERO: Reminds not to waste food and encourages to try food you think might not be yummy.

---

---

# Secondary Segment

## SECONDARY SPORTS DAY

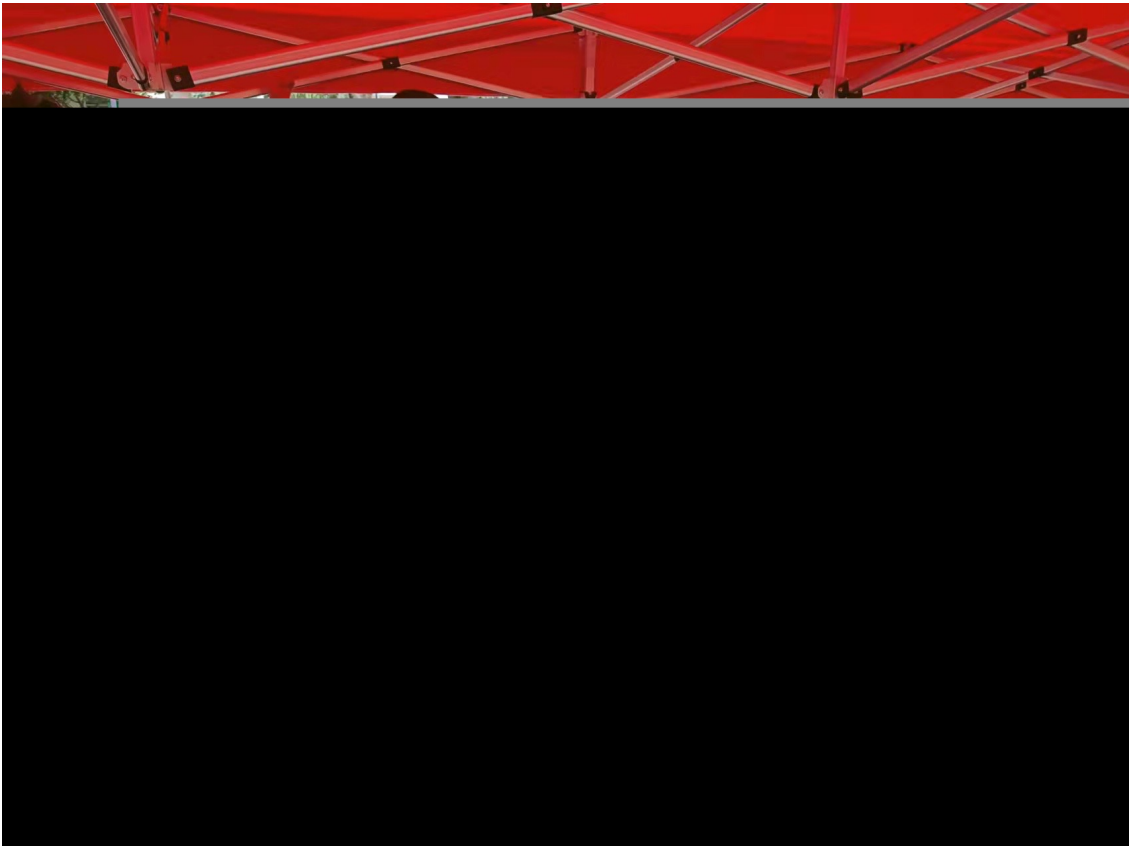
On Friday April 15<sup>th</sup>, ZIS held its annual Sports Day. The morning was full of sports such as Football (Soccer), Basketball, and Volleyball. There were teams featured from all four houses. The competition was fierce and intense. All participants showed great respect and sportsmanship towards each other.

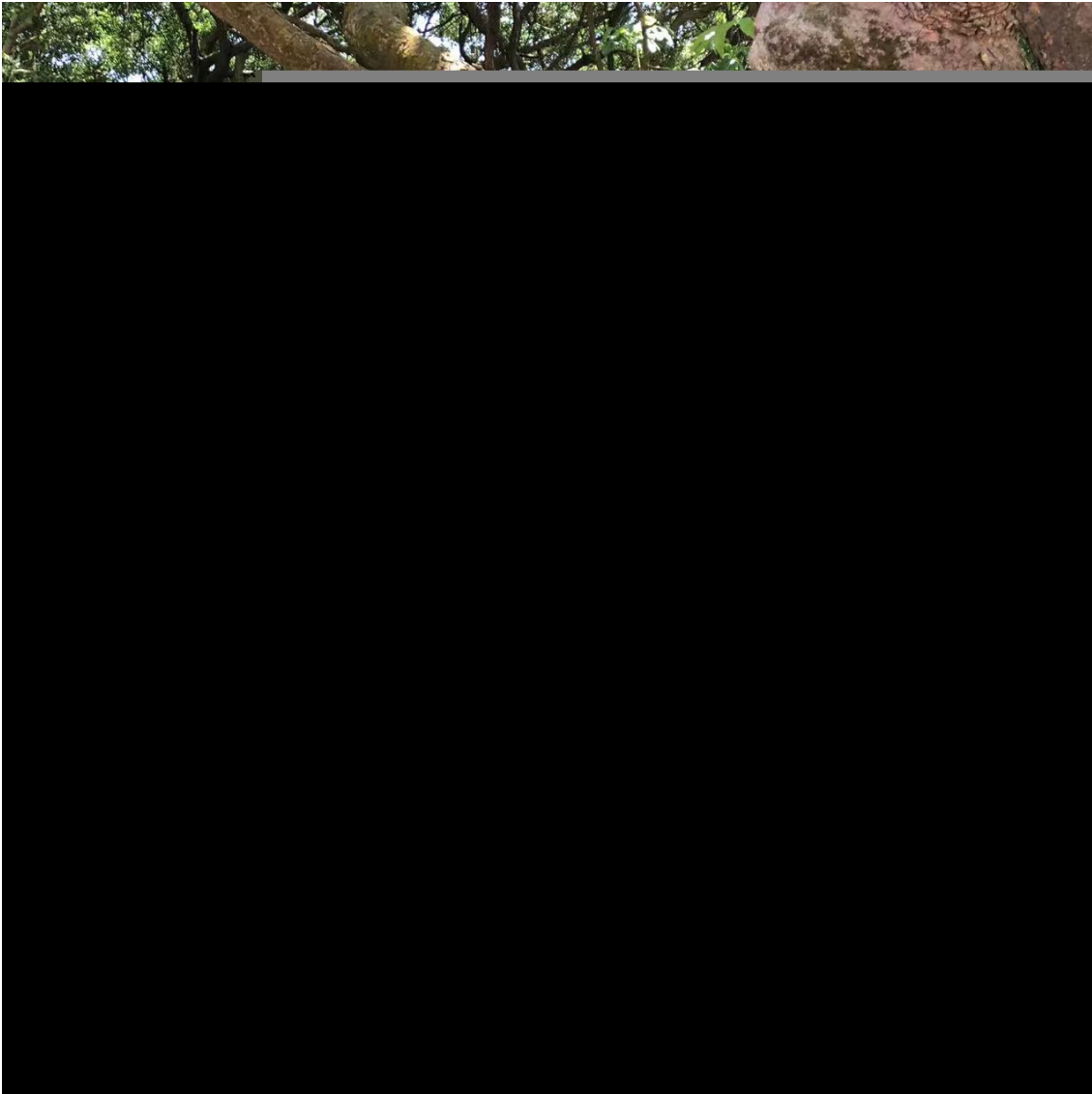
After a very inspirational charity music concert, the day culminated with house relay races and a tug of war competition. In the end, it was the Red House who came in first followed by the second place Yellow House, Blue House, and then Green. All competitions were well played and enjoyed by all. Thank you very much ZIS Students and Staff. Great job!!!!

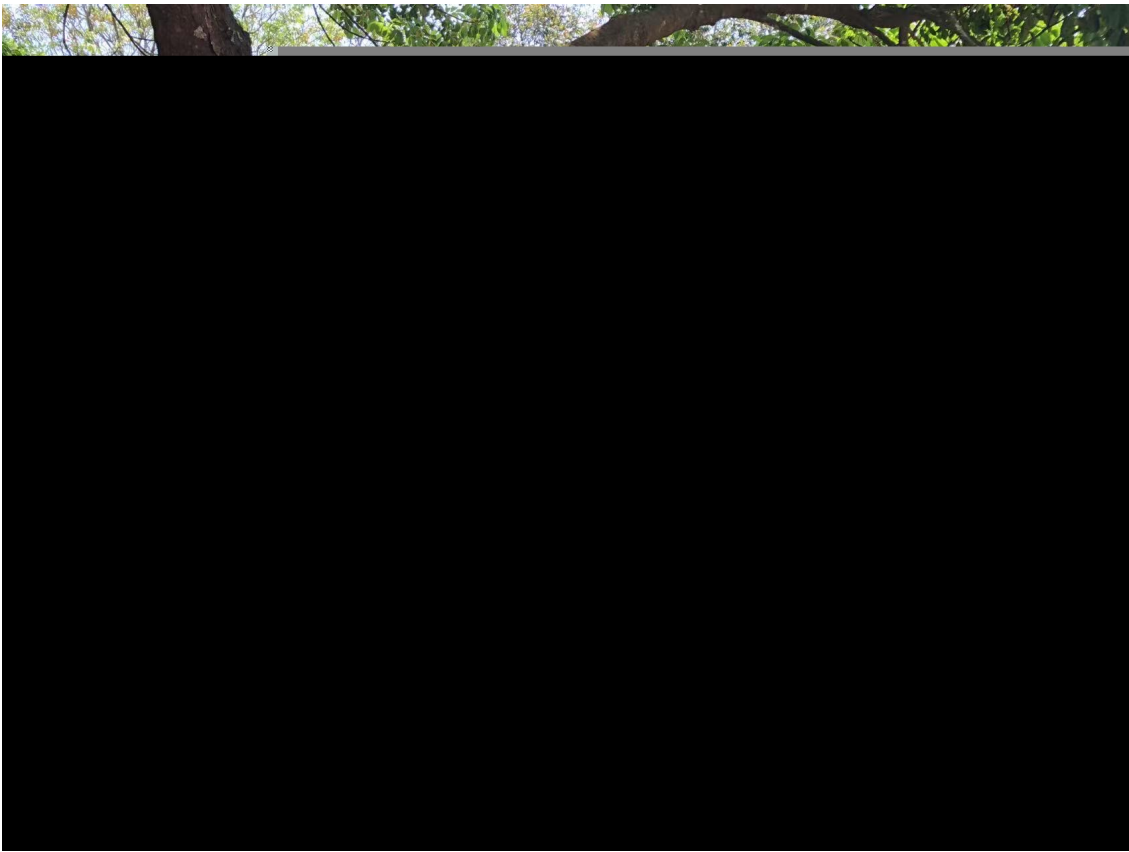
Warm regards,

**Martin Wurmlinger**

**Secondary PHE Teacher**







## WHAT'S COOKING?

SCHOOL  
LUNCH



Lunch Menus,  
our food safety guidelines,  
and past editions of  
"The Banyan" Newsletter  
are available  
at [zischina.com](http://zischina.com)

Friend on Facebook

Follow on Instagram

Copyright © 2022 Zhuhai International School, All rights reserved.

Want to change how you receive these emails?

You can [update your preferences](#) or [unsubscribe from this list](#).

